

We deliver  
excellence



**PAM**

P L A S T I C S

[www.pamplastics.com](http://www.pamplastics.com)

## Our story, values and philosophy

---

Incorporated in year 1975, Pam Plastics was started as Bharat Polymer by Late Prabhudev Pranjivandas Kansara. The company started its journey with barely little finance and small workshop in Billimora. It entered the business world with agricultural and other engineered products. In no time the founder then became an eminent part into the construction of golden bridge in Bharuch. The expansion just widened with the addition of products like plastic sheets, P.P filter plates, plastic valves, and plastic engineering products.. After the year 1977, the legacy of the company is continued by Mr. Bharat Kansara and Mr. Dipak Kansara. Their practical experiences, complete knowledge and confidence have given PAM a great upliftment.

### MISSION

Through our passion and commitment, our mission is to deliver qualitative products that will add value to the smooth functioning of our target industries.

### VISION

We are passionate and equally focused in delivering excellence with our each product. This guiding force will help us maximize our client's business and reach our target equally in time.

### CORE VALUES

**Quality** – Zeal to provide clients with class apart products and services, increasing the longevity of the machineries as well.

**Performance** – A good performance drives excellence and this is what the company aims for. Every product is well engineered to stand the test of time.

**Honesty** – The Company's honesty with its clients has got the laurel and appreciation. This value of ours has built a long term and trustworthy relationship.

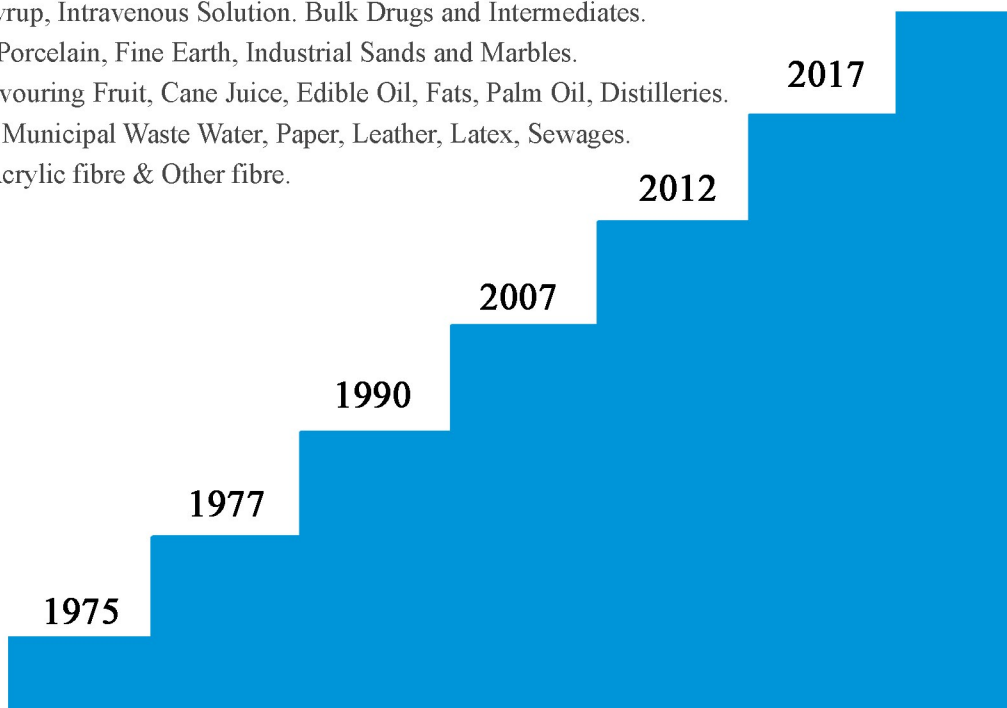
**Team work** – An efficient and experienced team that has a keen eye on every detail on the production of required products.

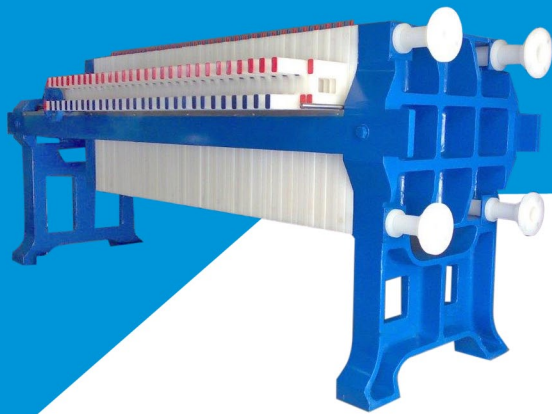
**Research** – A complete and well-equipped research is done to understand and perform in the demand-supply market well.

## Industries We Serve

---

<b>DYESTUFF</b>	: Dyestuff, Pigments, Intermediates
<b>CHEMICALS</b>	: Basic Chemicals, Organic and Inorganic, Phosphoric, Compounds, Marine Chemicals, Silica, Activated Clay, Resins, Starch, Enzymes, Pesticides.
<b>METALLURGY</b>	: Nickel, Copper, Zink, Lead, Silver and Non-ferrous Metals.
<b>PHARMACEUTICALS</b>	: Antibiotics, Syrup, Intravenous Solution. Bulk Drugs and Intermediates.
<b>CERAMICS</b>	: Kaolin, Clay, Porcelain, Fine Earth, Industrial Sands and Marbles.
<b>FOOD AND BEVERAGES</b>	: Soups and Flavouring Fruit, Cane Juice, Edible Oil, Fats, Palm Oil, Distilleries.
<b>POLLUTION</b>	: Industrial and Municipal Waste Water, Paper, Leather, Latex, Sewages.
<b>VISCOSE</b>	: Stable fibre, Acrylic fibre & Other fibre.





size (mm) : 200, 250, 355, 460, 610, 630, 760, 800, 915, 1000, 1200, 1500

## FILTER PRESS

An industrial tool used for the separation process. It separates the solid particles from the liquid. This kind of product is made of effective and reliable technique to meet today's requirement.

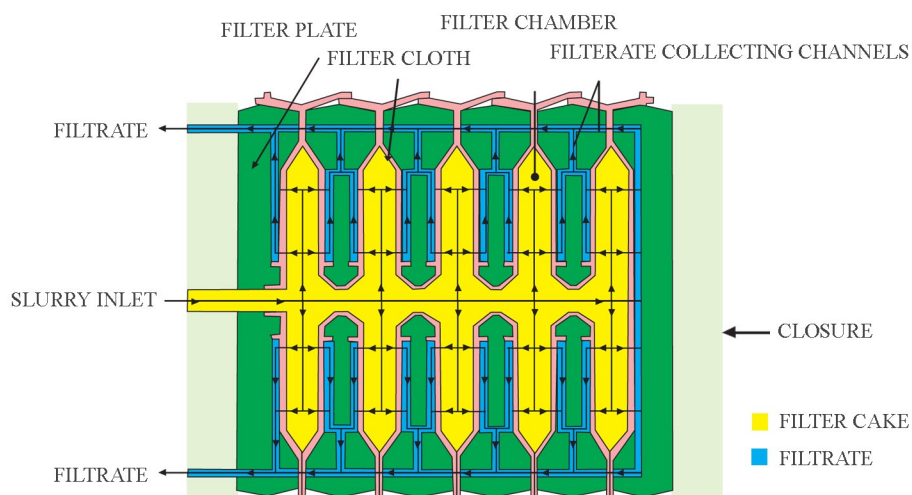
There are different kinds of filter press:

- Manual Filter Press
- Semi Automatic Filter Press
- Automatic Filter Press
- Membrane Filter Press
- High Volume Filter Press

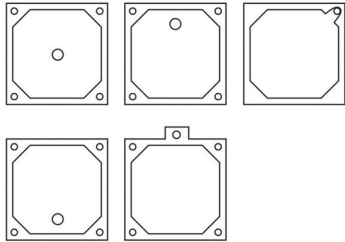
## FULL RANGE OF SIZES AND TYPES

- Plate & Frame
- Recessed Plate
- Caulked and Gasketed
- Membrane & Companion Plate
- Feed port varieties
- Wash- non wash option
- High pressure application option
- Filter cloth can also be offered

## CAKE FORMATION IN A CHAMBER FILTER PRESS



**MEMBRANE FILTER PLATE**



Membrane Center Feed Plate

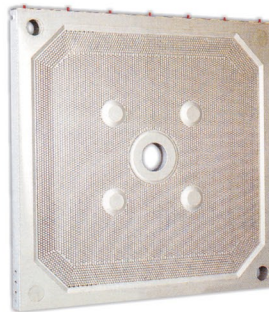
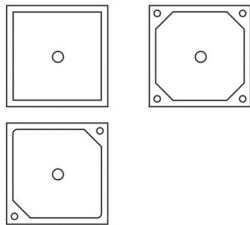


Membrane Companion Plate

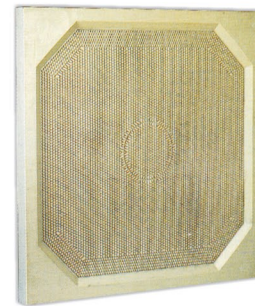
FEED EYE OPTIONS

Size (mm) : 630, 800, 1000, 1200, 1500

**CHAMBER FILTER PLATES**



Standard Chamber Plate

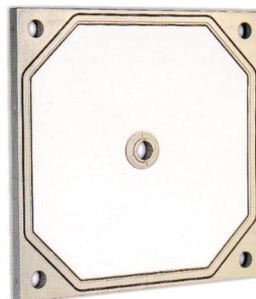
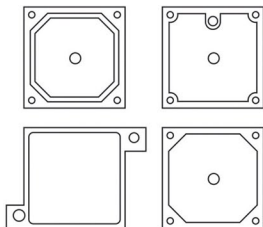


Standard Chamber plate without Stay boss

WASH - NON WASH OPTION

Size (mm) : 250, 355, 470, 610,760, 800,915, 1000, 1200, 1500

**CGR FILTER ELEMENTS  
PLATE AND FRAMES**



CGR Plate

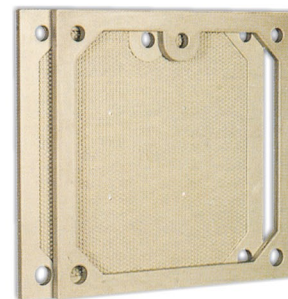
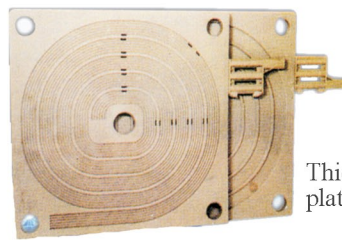
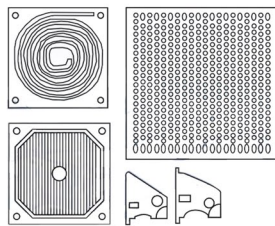


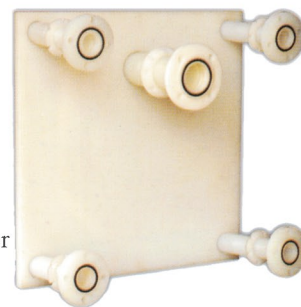
Plate and Frames

Size (mm) : 630, 800, 915, 1000, 1200, 1500

**SPECIAL FILTER PLATES  
AND ACCESSORIES**



Thickner plate



Adopter plate with Nozzel

OD	ID	L (inch)	COLLER OD
32	16	260 (10")	50
38	25	300 (12")	60
48	35	300(12")	70
48	35	400(16")	100
60	45	400(16")	85/110
60	40	483(19")	85
64	40	483(19")	90
72 to 74	54	483(19")	105
74	54	610(24")	105
75	50	365(14.3")	115
78 to 80	58	460(18")	110
85	65	400(16")	110
90	70	460(18")	120
90	65	440(17")	133
90	68	610(24")	140
100	75	500(20")	137
115	90	490(19.3")	150
115	90	610(24")	150
124	100	584(21")	170
127	100	584(21")	170
141	113	610(24")	205
169	139	610(24")	205
204	150	545(21.5")	247

### PP Nozzle



### Accessories



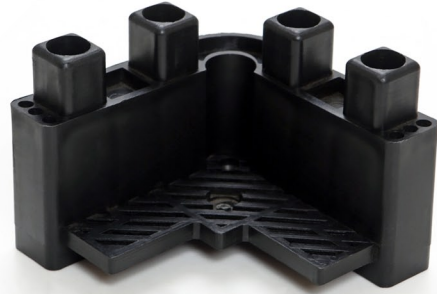
### PP Grommet



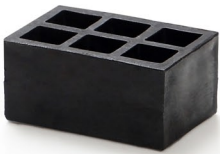
Size (mm) : 40, 50, 60, 70, 90



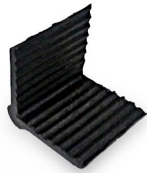
Homeopathic Bottles



Plastic Corner guard



PP/HDPE Spacer



Plastics Edge Protector  
(12 mm)



Plastics Edge Protector  
(20 mm)



Plastic Fire Nozzle



Thickness : 100 to 350 (mm)  
HDPE Block (Customize Size)

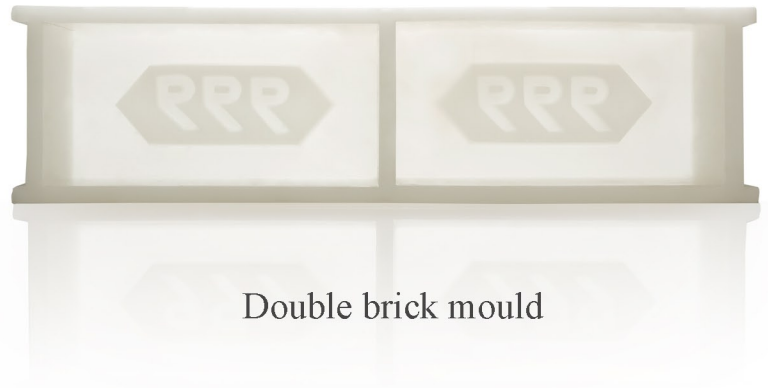


Thickness : 100 to 350 (mm)  
PP Block (Square & Round)

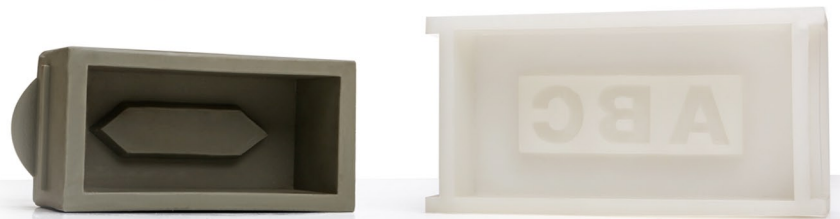


HDPE Block : 755 x 400 x 360 (mm)

Length	Width	Height
9" 4	4" 4	3" 4
9" 5	4" 5	3" 1.5
9" 2	4" 2	3" 2
9" 4	4"	3" 2
7" 7	3" 5	3" 5
9"4	4"4.5	3"2
9"2	4"2	3"6
9"6	4"6	3"1.5
9" 4	4" 4	3" 2
9"4	4"4	3"5
9"7	5"	3"
9"4	4"3	3"4
9"7	4"7	3"2
9"6	4"6	3"2.5
9"4	4"3.5	2"7.5
9"4	4"4	3"
9" 2	4" 2	3" 5
9"1.5	4".4	3".2
9"2.5	4"2.5	3"3.5
9".4	4".6	3".1
9"6	4"6	3"1
10"4	5"2	3"3
10"6	5"4	3"4
10"	5"	3"2.5
10"	5"1	3"3
10"2	4"7	3"2
10"2	5"2	3"2
10"4	5"2	3"2
10"6	5"3	3"3



Double brick mould



Single brick mould



Single brick mould



Single extended brick mould



Plot No. 433,  
Phase - 2, G. I. D. C. Industrial Estate,  
Kabilpore, Navsari - 396424  
Gujarat, India  
+(91) (2637) 656659

[www.pamplastics.com](http://www.pamplastics.com)  
[www.pamplastics.in](http://www.pamplastics.in)  
[www.pamplastics.co.in](http://www.pamplastics.co.in)

[pamplastics@gmail.com](mailto:pamplastics@gmail.com)